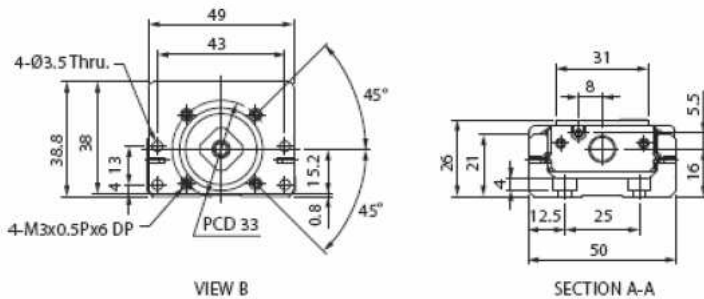
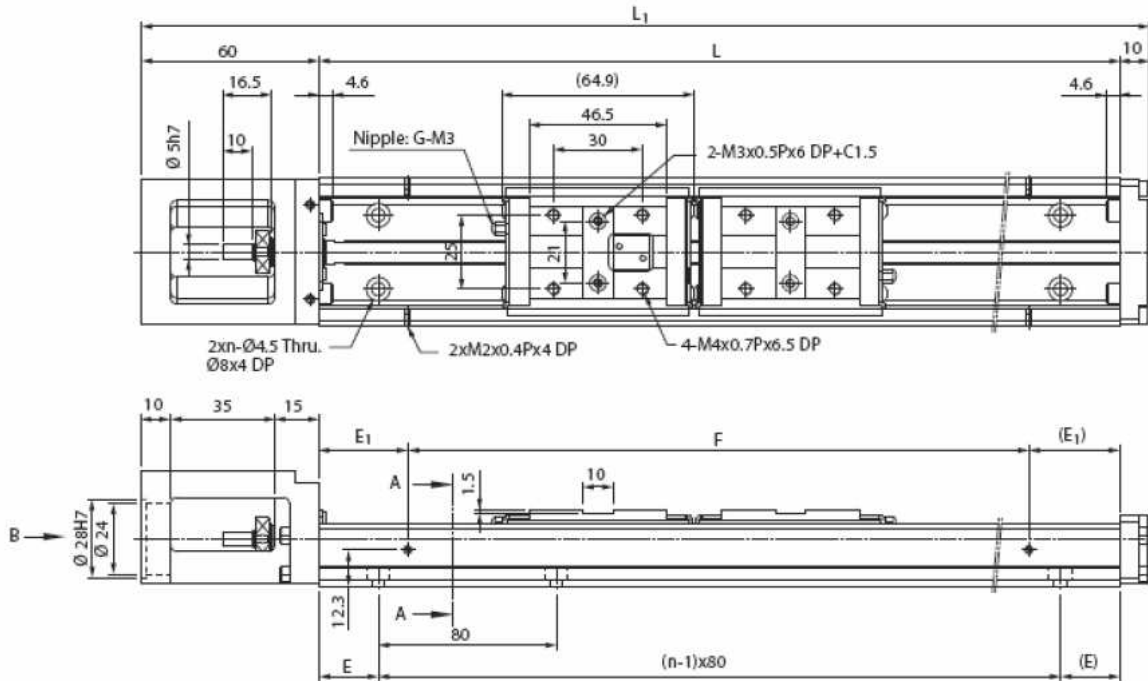


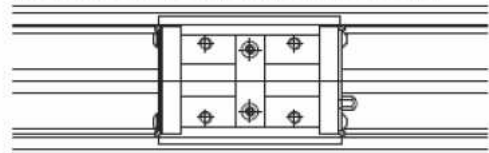
### KM 26 standard type

**A type** : A single carriage-nut with standard length

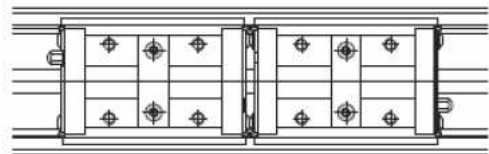
**B type** : Two carriage-nuts with standard length



The direction of nipple with a single carriage-nut using



The direction of nipple with two carriage-nuts using



Unit : mm

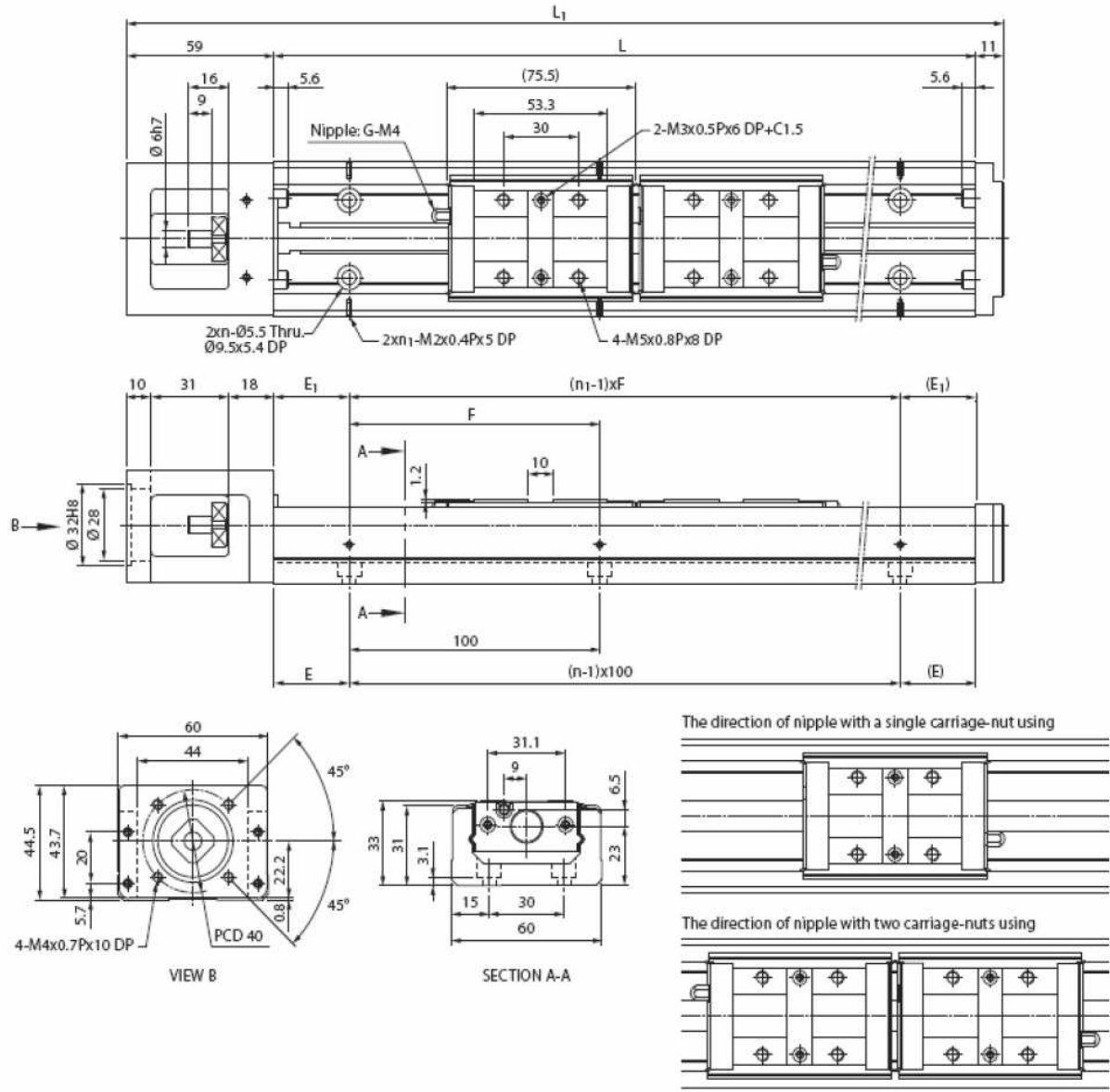
Rail Length L	Overall Length L <sub>1</sub>	Max. Stroke		E	n	E <sub>1</sub>	F	Weight (kg)	
		A Type	B Type					A Type	B Type
150	220	75.8	-	35	2	35	80	0.98	-
200	270	125.8	60.8	20	3	20	160	1.18	1.37
250	320	175.8	110.8	45	3	45	160	1.38	1.57
300	370	225.8	160.8	30	4	30	240	1.59	1.78

\* The max. stroke of B type is base on two carriage-nuts used in closed contact with each other.

### KM 33 standard type

**A type:** A single carriage-nut with standard length

**B type:** Two carriage-nuts with standard length



Unit : mm

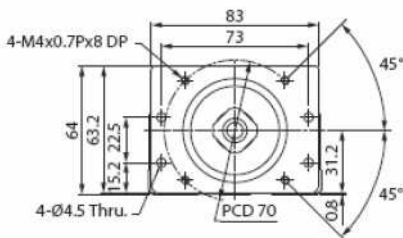
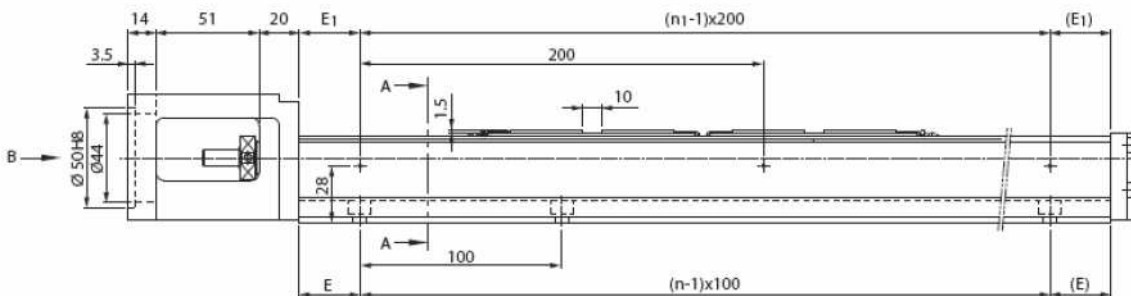
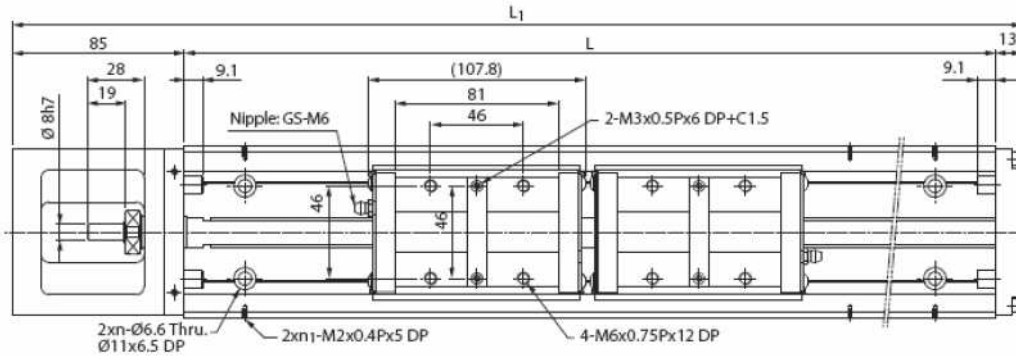
Rail Length L	Overall Length L <sub>1</sub>	Max. Stroke		E	n	E <sub>1</sub>	n <sub>1</sub>	F	Weight (kg)	
		A Type	B Type						A Type	B Type
150	220	63.3	-	25	2	25	2	100	1.67	-
200	270	113.3	-	50	2	50	2	100	1.98	-
300	370	213.3	137.8	50	3	50	2	200	2.56	2.91
400	470	313.3	237.8	50	4	100	2	200	3.15	3.5
500	570	413.3	337.8	50	5	50	3	200	3.85	4.2
600	670	513.3	437.8	50	6	100	3	200	4.46	4.81

\* The max. stroke of B type is base on two carriage-nuts used in closed contact with each other.

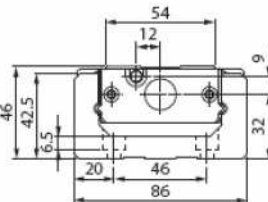
### KM 46 standard type

**A type** : A single carriage-nut with standard length

**B type** : Two carriage-nuts with standard length

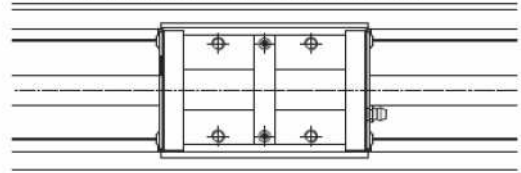


VIEW B

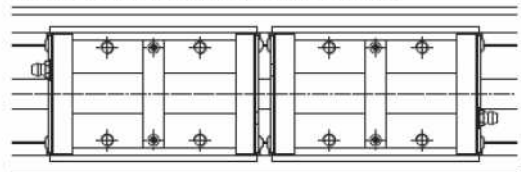


SECTION A-A

The direction of nipple with a single carriage-nut using



The direction of nipple with two carriage-nuts using



Unit : mm

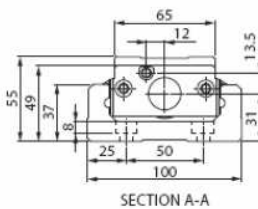
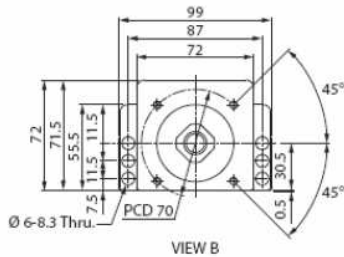
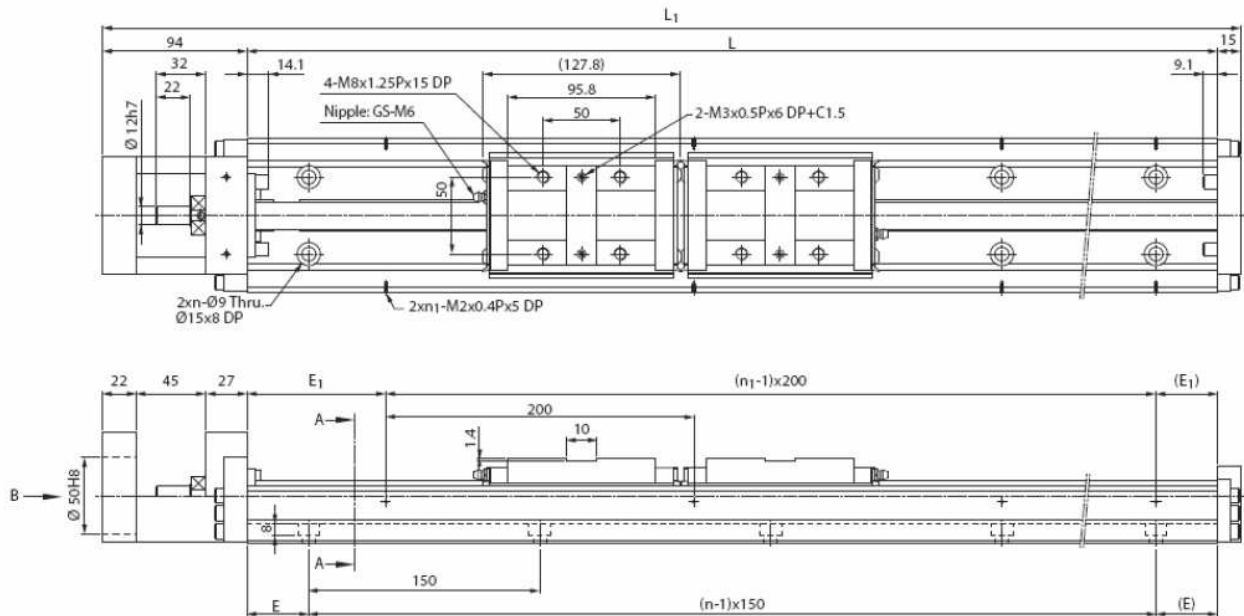
Rail Length L	Overall Length L <sub>1</sub>	Max. Stroke		E	n	E <sub>1</sub>	n <sub>1</sub>	Weight (kg)	
		A Type	B Type					A Type	B Type
340	438	216	110	70	3	70	2	7.65	8.85
440	538	316	210	70	4	20	3	8.94	10.14
540	638	416	310	70	5	70	3	10.24	11.44
640	738	516	410	70	6	20	4	11.55	12.75
740	838	616	510	70	7	70	4	12.95	14.15
940	1038	816	710	70	9	70	5	15.24	16.44

\* The max. stroke of B type is base on two carriage-nuts used in closed contact with each other.

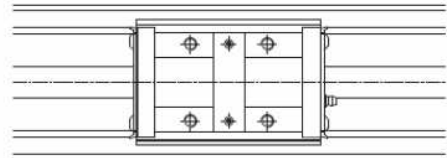
### KM 55 standard type

**A type** : A single carriage-nut with standard length

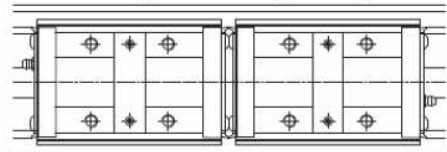
**B type** : Two carriage-nuts with standard length



The direction of nipple with a single carriage-nut using



The direction of nipple with two carriage-nuts using



Unit : mm

Rail Length L	Overall Length L <sub>1</sub>	Max. Stroke		E	n	E <sub>1</sub>	n <sub>1</sub>	Weight (kg)	
		A Type	B Type					A Type	B Type
980	1089	828	699	40	7	90	5	19.90	21.62
1080	1189	928	799	15	8	40	6	21.63	23.35
1180	1289	1028	899	65	8	90	6	23.36	25.08
1280	1389	1128	999	40	9	40	7	25.09	26.81
1380	1489	1228	1099	15	10	90	7	26.82	28.54

\* The max. stroke of B type is base on two carriage-nuts used in closed contact with each other.